



ENERGY VALVES

PRODUCT SPOTLIGHT

Wheatley/Tom Wheatley Check Valves

The oil and gas industry demands rigorous performance. No name is more synonymous with toughness and dependability than Wheatley! We think it is time to shine the EV spotlight on this industry staple.

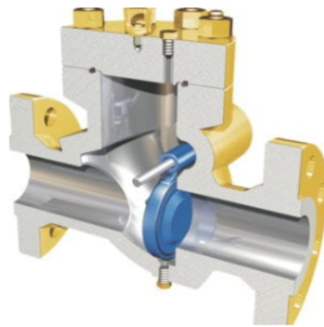
Wheatley 500 Series

316 stainless steel trim is compatible with a broad range of media and operating conditions

Full-open, through-conduit design for low pressure drop and less turbulence. Valves easily pass pigs and spheres

All materials conform to NACE [MR0175/ISO 15156](#)

Canadian Registration Number (CRN) available upon request



Tom Wheatley Piston Check Valve

Size range: 2" through 12"

ANSI Classes: [150](#) to 1500

Full open/top mounted

Controlled clapper movement

Horizontal or vertical service

Stainless steel piston, is standard

Wheatley 822 Series

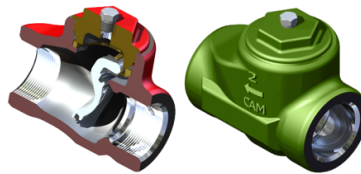
Designed in accordance with ASME [B16.34](#)

Materials of construction that conform to NACE [MR0175/ISO 15156](#)

Solid 316 stainless steel clapper and

Full opening

Horizontal or vertical flow-up



Cut-out (left) and full (right) view of the Series 822 check valve.



Bevelled, self-aligning clapper (left) and seat (right) design.

Features worth reiterating:

1. All trim combinations conform with NACE MR0175
2. All Series 500, 2" and above, are fire tested to API 6FD
3. All the standard trim Wheatley and Tom Wheatley check valves come standard with a SS clapper
4. The standard seal material is Buna, but Energy Valves also stocks the Viton trimmed configuration

If you have any questions, or would like more information, please do not hesitate to reach out!